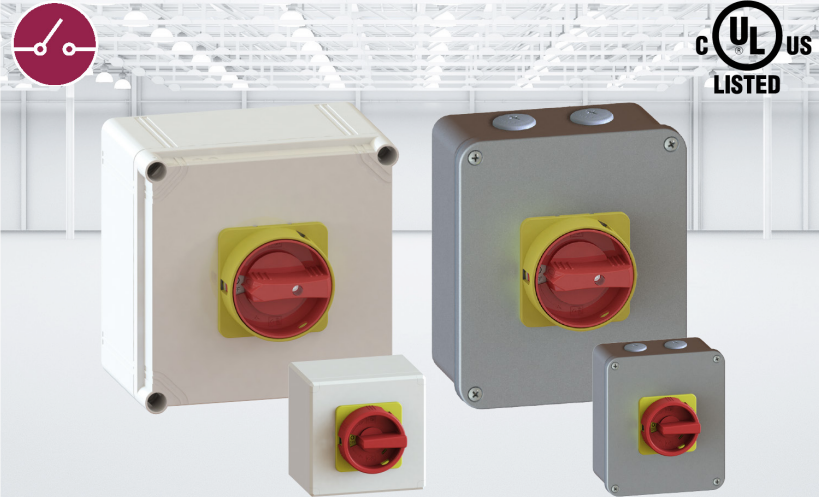


Repair and Maintenance Switch Disconnect Switches ML1-3

- Main Switches
- Emergency-Off



Available colours for all housing designs

UL50E Approved - NEMA Type 4X / IP 66



MERZ

Schaltgeräte GMBH + CO KG

The current newsletter for
innovative switchgear

www.merz-schaltgeraete.de

October 2019

19/4 | Disconnect Switch ML1, ML2, ML3
UL50 Approved - NEMA Type 4X

December 2019

19/5 | Christmas greetings

Repair and Maintenance Switches

As Main Switch or Emergency-Off Switch!

Available in Polycarbonate- or Aluminium Enclosure
-> Switch + Enclosure UL-listed

Complete-Types - Series ML 1-3 in Enclosure, IP / NEMA Type 4X



01 | Technical datas

AC 21 A		ML1 -025	ML1 -040	ML2 -063	ML2 -080	ML3 -125
Rated operating current I_e	A	25	40	63	80	125
Rated voltage U_e	V	690	690	690	690	690
Rated uninterrupted current (open) $I_u = I_{th}$	A	25	40	63	80	125
Conventional enclosed thermal current I_{the}	A	25	40	63	63	100
Rated insulation voltage U_i Insulation group C under VDE 0110	V	690	690	690	690	690

NEMA Type 4X



			ML1 -025	ML1 -040	ML2 -063	ML2 -080	ML3 -125
<i>Making/breaking capacity</i>							
<i>Service category AC3</i>	AC 3						
<i>Motor switch</i>	230 V 3~	kW	5,5	7,5	15	18,5	22
<i>for optional</i>	400 V 3~	kW	7,5	11	22	30	37
<i>switching</i>	690 V 3~	kW	7,5	11	22	30	45
<i>Service category AC23 A/B</i>		AC23 A/B					
<i>Motor switch</i>	230 V 3~	kW	7,5/-	11/-	-/18,5	-/22	-/25
<i>for optional</i>	400 V 3~	kW	11/-	15/-	-/30	-/37	-/45
<i>switching</i>	690 V 3~	kW	11/-	15/-	-/30	-/37	-/45
<i>Service category AC22 A/B</i>		AC22 A/B					
<i>Motor switch</i>	230 V 3~	A	25/-	40/-	63/-	-/-	-/-
<i>for optional</i>	400 V 3~	A	25/-	40/-	63/-	-/80	-/125
<i>switching</i>	690 V 3~	A	25/-	40/-	63/-	-/-	-/-



UL50E