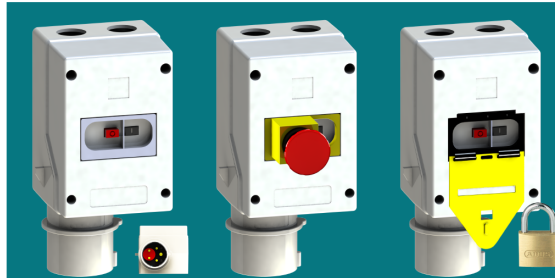


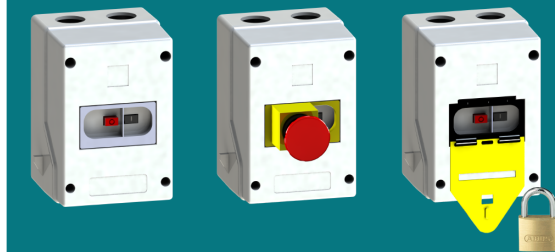
MERZ Schaltgeräte GMBH + CO KG



Motor Protective Circuit Breakers MS
Enclosure CM.7100



Motor Protective Circuit Breakers MS
Enclosure DM.8000



MERZ

Schaltgeräte GMBH + CO KG

The current newsletter for
innovative switchgear

www.merz-schaltgeraete.de

April 2020

20/2 | Motor Protective Circuit Breakers

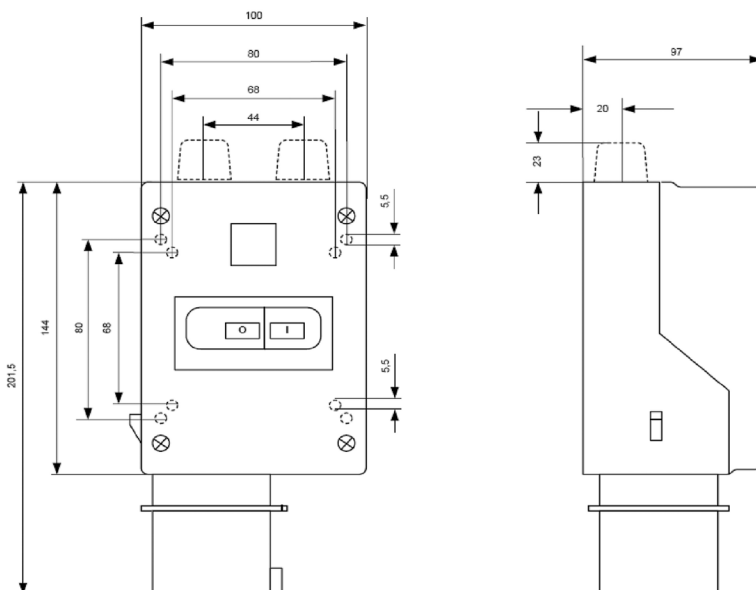
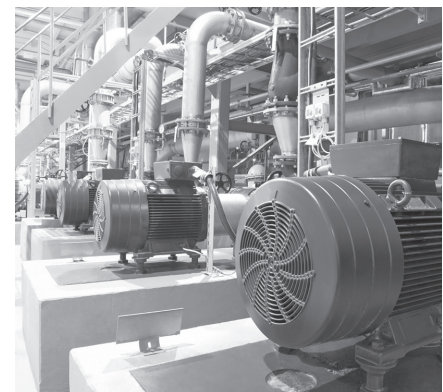
July 2020

20/3 | Automated Guided Vehicle - AGV

Motor Protective Circuit Breakers MS - IE3READY

CEE-Device plug, Phase inverter, Lockout padlock
Emergency-Stop Button latching, Undervoltage release uvr

- Nominal rated currents 0,1 bis 32 A, temperatur compensated, IE3 compliant,
- By IEC 60947-4-1, DIN EN 60947-4-1, VDE 0660-102; UL508



01 | Motor Protective Circuit Breakers MS:

CM.7100 - Housing - Iso-Enclosure
with CEE device plug 16A, 3P+N+
PE, 400V 6h

DM.8000 - Housing - Iso-Enclosure
without CEE device plug

