

Repair and Maintenance Switch with EMC-Solution ElectroMagnetical Environment



MERZ SCHALTGERÄTE GMBH + CO KG



MERZ

Schaltgeräte GMBH + CO KG

The current newsletter for
innovative switchgear

www.merz-schaltgeraete.de

February 2022 |

22/1 | MERZ - EMC Solution
(ElectroMagnetical Environment)

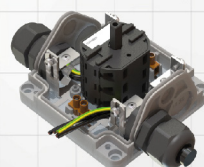
April 2022 |

22/2 | MERZ - DC String-Box-Family

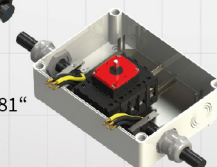
EMC COMPLIANT INSTALLATION WITH MERZ REPAIR AND MAINTENANCE SWITCHES

Frequency inverters are becoming more and more standard for many applications. For example for pumps, ventilators, lifts, cranes, fairground rides or machine tools. These are only sorts of many possible applications. An EMC-compliant installation is therefore mandatory. The shielding of the cables requires a large sca connection to reach a permanent radiation characteristic below the given thresholds. For the isolating enclosures of the **Series I1 to I3**, Series **8900N to 8981N** and Series **81X0 to 81X1** and the isolating with it`s EMC plates and shielding clamps is a simple and cost competitive method to realize an EMC compliant solution. The modular system is saving stock space and money. Optionally MERZ offers a wide range of repair- and maintenance switches in aluminium and sheet metal enclosures. Ready to mount, including sealing plug screws, cover earthing, and **EMC-cable glands**.

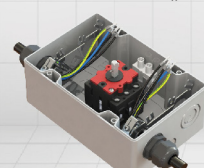
Enclosure series „I“



Enclosure series „89“



Enclosure series „81“



Enclosure series „AL“



EMC
Version
Version
EMV