

# ZUBEHÖR ACCESSORIES

(MLO-ML3)



*Switch to Quality!*



Neutralleiterkontakt  
*Neutral switched*



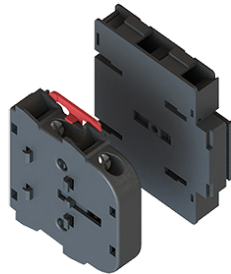
N-Klemme  
*N-terminal*



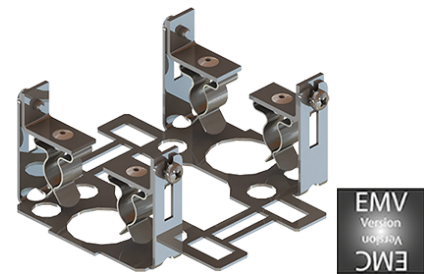
PE-Klemme  
*PE-terminal*



Schaltkontakt  
*Switching contact*



Hilfsschalter 1S + 1Ö  
*Auxiliary contact 1NO + 1NC*  
2KL Anreihklemmen 2-polig  
*2KL Terminal 2-pole*



EMV Abschirmlösung  
*EMC shielding solution*



Gehäuse Serie 89xx  
*Enclosures series 89xx*



Zusatzfrontschilder  
*Additional front plates*



Schlüsselbetätigungen  
*Key operation*



Achsverlängerung in Kombination mit Türkupplung  
*Extension shafts in combination with door coupling*