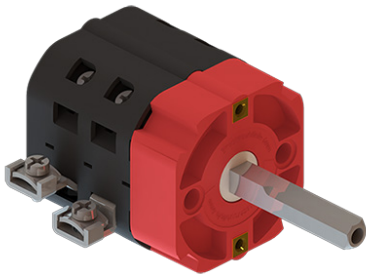


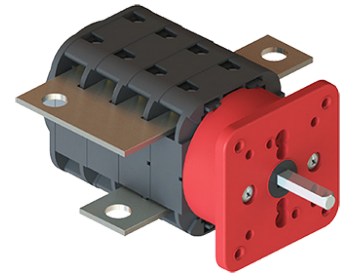
ZUBEHÖR ACCESSORIES



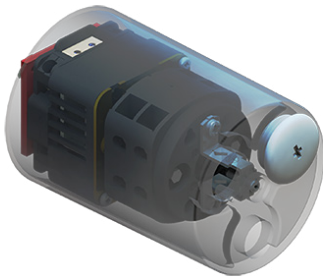
Anschlußwinkel
Extension terminals



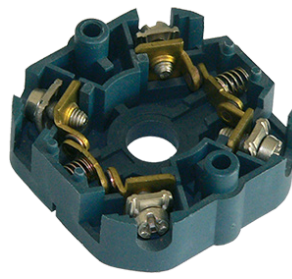
Flachstecker
Blade terminals



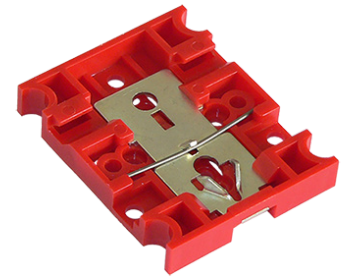
Hochstromverbinder
Heavy current connectors



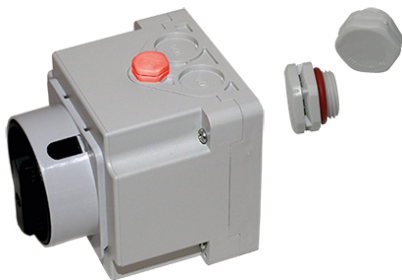
Schutzhauben
Protecting covers



Vergoldete Kontakte
Gold plated contacts



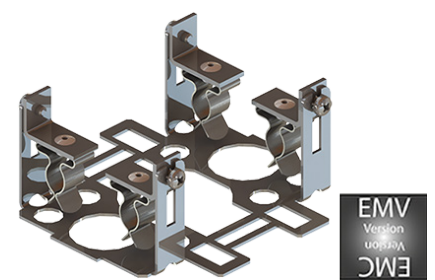
Schnappbefestigung
Snap-on mounting



Druckausgleichselement
Pressure balance element



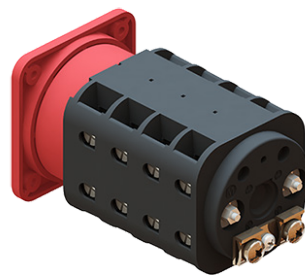
Dichtungssatz I1-I3
Back Panel Gasket I1-I3



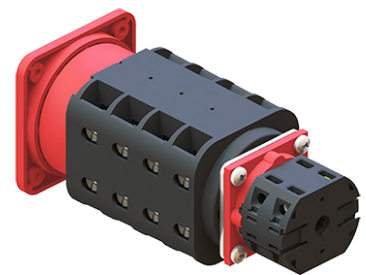
EMV Abschirmlösung
EMC shielding solution



Unterspannungsauslösung USPA
Undervoltage release UVR



PE-Klemme - N-Klemme
PE-terminal - N-terminal



Schalterkupplung
Switch couplings

ZUBEHÖR ACCESSORIES



Switch to Quality!



Knebelgriff P / Kugelgriff K
Handles P / Spherical handles K



Sperrgriff mit großem Ausschnitt
Locking Handles with large cutout



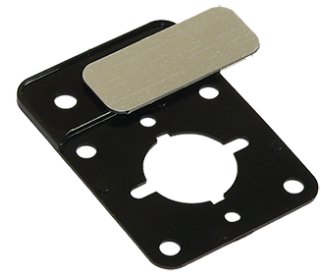
Schlüsselbetätigungen
Key operation



Stahlantriebsachse / Achsverlängerung
Steel-axle-shaft / Extension shafts



Zusatzfrontschilder - gelb
Additional front plates yellow



Zusatzfrontschild
Additional front plates



Zusatzfrontschild
Additional front plates